



# INDEX

---

<b>01 GLOSSARY</b>	3
<b>02 ABBREVIATIONS</b>	4
<b>03 DISCLAIMER</b>	5
<b>04 SUMMARY</b>	6
04.1 Introduction	6
04.2 Who are we?	6
04.3 What is GalaxyDust?	7
<b>05 METAVERSE GALAXYDUST</b>	7
05.1 Gameplay	8
05.2 How to Start?	10
05.3 Resources	11
05.4 Tools	11
05.5 Blueprints	12
05.4.1 Materializer	12
05.6 Technologies	12
05.7 Structures	13
05.8 Planets	13
05.8.1 Pocket Galaxies	13
05.9 Ships	14
05.9.1 Types of ships	14
05.9.2 Astrobots	17
05.10 Badges	17
05.11 Licenses	17
05.12 Expeditions	18
05.13 Consumables	18
05.14 NPCs	19
05.15 Professions	20
05.16 Alliances	22

# INDEX

---

<b>06 GALAXYDUST COIN</b>	<b>23</b>
06.1 What is the GD COIN?	23
06.2 Digital Assets	23
06.2.1 Assets marketplace	24
06.3 Governance (DAOs)	25
06.3.1 What is the Sasori Token?	25
06.3.2 Voting system inside GalaxyDust	25
06.3.3 Colonization mode	25
06.3.4 Conquest mode	25
06.3.5 Giveaways	26
<b>07 PLATFORM</b>	<b>29</b>
07.1 Assets marketplace	29
07.2 Technologies	29
07.2.1 Blockchain Technologies	29
07.2.2 Wallets	29
07.2.3 Application & Game Engine Development	29
07.2.4 Future Technologies	29
<b>08 ROADMAP</b>	<b>30</b>
08.1 Challenges	30
08.2 Achieved goals	30
08.3 Where do we go?	31
08.3.1 2023 Planning	31

# GLOSSARY

---

**Assets** – these are game elements generated by the player, which possess value, are exchangeable, and have a specific function within the game experience.

---

**Fee** – it's a sum of money that is paid to a person or an organization in exchange for a service rendered or for the right to use a particular product or service. It is usually a fixed amount or a percentage of the total cost of the service or product provided.

---

**Galaxy** – unit of measurement that represents an area within GalaxyDust, equivalent to 1,000 Stars.

---

**GalaxyDusters** – players of GalaxyDust Game.

---

**Galaxy Cluster** – unit of measurement that represents an area within GalaxyDust, equivalent to 10,000 Stars.

---

**Market** – place where commercial transactions of assets or services are carried out, whether physical or virtual.

---

**Mint** – is the process of creating or generating new units of a cryptocurrency or digital asset. It involves the validation and addition of new transactions to the blockchain network.

---

**Star Cluster** – unit of measurement that represents an area within GalaxyDust, equivalent to 100 Stars.

---

**Smart Contract** – is a computer program that automatically verifies, executes, and enforces the terms of a contract on a blockchain.

---

# ABBREVIATIONS

---

**P.V.P** – Player versus Player

---

**P.V.E** – Player vs Environment

---

**N.F.T** – Non Fungible Token

---

**QMC** – Quantum Miniaturizer Component

---

**QMP** – Quantum Miniaturizer Platform

---

**DAO** – Decentralized Autonomous Organization

---

**PG** – Pocket Galaxy

---

**NPC** – Non-Player Character

---

**AI** – Artificial Intelligence

---

**UPS** – Universal Position System

---

# DISCLAIMER

---

- ◆ The following is an informative document that is subject to future changes and updates.
- ◆ Under no circumstances does it intend to formulate recommendations or financial investment advice, nor will it do so in the future.
- ◆ It is solely the responsibility of the reader to decide how to use the information presented here. Remember, freedom implies responsibility.

# SUMMARY

---

## ◆ INTRODUCTION

What is real? Is the keyboard under your fingers real? The screen where you're reading this? The avatar you control in a game is just a combination of zeros and ones trapped inside a processor, or is it another conscious being existing in a different reality and time, interacting with you unknowingly?

GalaxyDust is the found stone of the Sasori metaverse, a multi-platform universe that integrates games, audiovisual material, collectible art, merchandise, and digital economy, of which you will be an integral part in an immersive gaming experience that will change your life as you know it.

And this is just the beginning...

## ◆ WHO ARE WE?

GalaxyDust is made up of a team of creatives who aim to revive the purest form of the gaming experience, and through it, provide every player with the opportunity to truly take control of their own destiny both inside and outside the metaverse.

Making this a reality requires hard work and commitment, which is why at GalaxyDust, we have brought together a team of highly skilled and experienced individuals in the fields of technology, marketing, design, gameplay, and storytelling.

**The mainstay of a thriving community is communication, which is why we are present on the main social media platforms:**



There we maintain active channels and staff at your disposal.

# SUMMARY

---

## ◆ WHAT IS GALAXYDUST?

It is an immersive, multi-platform gaming experience where humanoid and alien avatars interact with players, breaking the barriers of space-time in an expanding metaverse, competing in the search for the resources necessary to build ships, weapons, and structures.

Each of these constitutes a piece of digital art in itself, with tradeable and authentic value, capable of being marketed within the metaverse.

These assets are entirely produced by the players and their value constantly and proportionally increases since the amount available is always limited in relation to the need that all players have for them.

Thus, the gaming experience remains in a dynamic cycle, always offering new challenges, and the players' development within the metaverse depends on their ability to find resources and produce the necessary assets.





# METAVVERSE GALAXYDUST

---

## ◆ GAMEPLAY

Explore galaxies, conquer solar systems, take resources from new stars, all from any device.

Write your name in history as the greatest commander of the known universe, flying your ships in any of the game modes provided by the best immersive gaming platform you have ever experienced, GalaxyDust.

## GAME MODES

**Exploration mode.** Travel through unknown galaxies in search of unexplored stars, collect their resources, and discover forgotten technologies and secrets along the way. Find digital assets, hidden rewards, and resources in the various stellar sectors.

**Action Combat.** Command your ship in first person, experience the feeling of sitting in the cockpit of your own ship using just your browser or console controller.

# METAVVERSE GALAXYDUST

---

## P.V.P

- **5 vs 5**

Prove that you know how to play as a team, by being a key piece for victory.

- **Campaign**

Plan and execute your own expansion plan throughout the universe, but remember, you're not the only commander out there.

- **Capture the Flag**

Take control of an objective before your rivals do and don't let them take yours.

- **Domination**

Here are your objectives, Commander. Go and fight for them. Whoever takes control of the most will dominate the galaxy.

- **Search and Destroy**

Surprise your adversaries by being the first one to destroy the target.

- **Sabotage**

Enter an expanding zone undetected and destroy your target. Remember, your enemies are after you.

- **Racing PVP**

Test your skills as a pilot and get the most out of your engines. Only the best will cross the finish line.

- **Protect the Queen**

Choose a massive-sized ship and beyond. Your mission will be to defend it until the end.

## P.V.E

- **5 vs BOSS**

Together with your comrades, you must face a great threat that looms over your planets and bases. Will you succeed?

- **Invasion**

Only you can protect the civilians from the hostile fleet. How long can you hold out?

- **Racing PVE**

Challenge NPCs to race against you. Will you be a better pilot than a machine?

# METVERSE GALAXYDUST

---

• **Tactic Mode:** Develop your strategy and defeat your opponents by deploying a 5-dimensional board in a turn-based tactical game.

- **PVP** Face off against other players by deploying your fleets.
- **PVE** Overcome the dangers of space by facing off against mercenary or alien fleets.

**Planet vs Planet:** Send your fleet to attack planet light-years away. Defend or counterattack against a fleet launched against your bases from deep space.

This semi-automatic mode allows you to engage in turn-based Player vs. Player/Environment combat. If after an hour, you or another player have not yet sent orders to your fleets, their preset commands will be executed.

**Voyage Mode:** Send your ships into deep space to collect resources for you automatically. What dangers will you have to face? What secrets will you find? Dare to discover it.

## ◆ HOW TO START?

You only need a ship and a tool, which you can acquire in the in-game P2P market or purchase it in NFT markets.

You can also take advantage of the "Free to Play" option. Enter the Sasori Metaverse at no cost using a basic non-NFT Ship and Tool that you obtain when you open your account on GalaxyDust, with which you can experience the different game modes, win prizes, and start your career in this metaverse.



# METaverse GALAXYDUST

## ◆ RESOURCES

They are the necessary raw materials to create and improve your in-game assets. Obtaining them is the basic gameplay action on which your ability to create new assets and grow as a player depends.

The main types of resources in GalaxyDust are:



Both **metal** and **crystal** allow you to create new assets, in different proportions. You can choose which one to mine predominantly over the other, which will define your path within GalaxyDust.

**Deuterium** is a VERY scarce resource that you can use as fuel to increase the speed of your ships or access certain limited sectors. Additionally, you can acquire special technologies using it and even choose to pay market fees in deuterium instead of using GD COIN.

The **energy** in GalaxyDust is a resource that must be accumulated in order to keep assets that consume it active.

Additionally, during seasonal events, special resources will appear that provide new mechanics and exclusive rewards within the game.

And very soon... Dark Matter will make its appearance in GalaxyDust...

Wait for it!...

## ◆ TOOLS

These assets allow the player to extract either of the two main resources. Their efficiency will also be affected by the technologies that the player has available.



# METAVEVERSE GALAXYDUST

---

## ◆ BLUEPRINTS

These are essential and interesting assets within the game mechanics. Blueprints are NFTs that allow you to mint, by paying a cost in "Resources" and GD Coins, the final NFTs with which you can interact within the metaverse, such as spaceships, structures, among others.

There are as many types of blueprints as there are assets that can be minted (astrobots, structures, technologies, defenses, ships, and others). The rarity of a blueprint will determine the quantity and quality that can be produced for a particular asset.

## MATERIALIZER

The Materializer is a special asset that allows you to mint an NFT from a Blueprint at a lower cost in materials and/or resources, but with a certain percentage of risk of loss, both of the resources used and the blueprint in case of failure.

Risk is part of the excitement.

## ◆ TECHNOLOGIES

Technologies refer to virtual assets that, upon acquisition, allow the player to unlock and access certain capabilities, as well as create and improve their assets within GalaxyDust. These technologies include components, tools, and systems that players can use to build structures, spaceships, and other assets.

By using them, players improve the performance and functionality of their assets, making them more productive and competitive.

# METVERSE GALAXYDUST

---

## ◆ STRUCTURES

Assets whose possession is a requirement for the manufacture of other assets. There are three types of structures:

**Production:** These allow for the generation of resources for trading and energy, which is necessary to keep other structures active.

**Facilities:** These represent the necessary installations for the production of assets or for providing services on the surface of planets within the game. Additionally, each active structure attributes bonuses and benefits to professions related to it, and receives upgrades from the technologies the player possesses.

**Hybrid:** These combine characteristics of both facilities and production structures.

## ◆ PLANETS

When starting in GalaxyDust, the player will choose an initial galaxy in which they will be randomly assigned a solar system and a planet within it. This will be the place where they will have their main base and place their first structures and technologies.

When the player occupies all the available space on their planet, they will have to conquer others if they wish to continue growing and avoid having their planet taken away from them.

## POCKET GALAXIES

These are highly rare and coveted assets that add an exciting layer of gameplay to GalaxyDust, allowing players to own and operate their own unique galaxies within the metaverse.

With a PG, the player can generate multiple PVE enemies and obtain exploration rewards within the stars of the galaxy.

Other players can enter the PG by paying an exploration fee, which becomes a passive income source for the owner, and explore it for unique objects and resources generated by the owner using the game's main resources: Metal and Crystal.

Players will be able to see what's inside a PG before exploring it, giving them an idea of the possible rewards and challenges that lie within.

# METAVVERSE GALAXY DUST

---

## SPACESHIPS

They are the main asset of the game, being the protagonists of GalaxyDust, along with the player. Depending on their type, they have different levels of attack, defense, armor, engine, and cargo capacity.

### TYPES OF SHIPS

According to their function:

#### Attack

Designed specifically to penetrate defenses and cause damage to enemy ships or bases. These ships are usually heavily armed and have great maneuverability to evade attacks. They can also be equipped with advanced technology, such as shields and high-precision weapons, to maximize their effectiveness in combat.

#### Cargo Ships

These ships can vary in size and capacity, from small ships to large transport cruisers with the ability to carry tons of cargo. They are equipped with advanced propulsion systems to travel long distances in space and can also have basic defense systems to protect themselves from any threats on the way.

#### Miner

Specialized in extracting valuable resources and materials from planets, asteroids, and other celestial bodies. These ships can be equipped with excavation tools and advanced mining equipment such as lasers and probes to extract and collect minerals and other resources.

#### Defense

Ideal for protecting an area or ship from enemy attacks, they are usually equipped with advanced systems, such as laser cannons, guided missiles, and energy shields, to repel any threat. They can also have great maneuverability to evade attacks and an advanced communication system to coordinate with other defense ships and form a solid defensive line.

#### Ship Carrier

A vessel designed to transport and launch other spaceships, astrobots, and other large structures. These ships can come in a wide variety of shapes and sizes, from huge transport ships to small shuttles. Ship carriers can be crucial in situations where a smaller ship cannot reach its destination on its own, either due to engine limitations, lack of hyperspace jumping capability, or to avoid enemy defense systems as well as transporting large structures.

#### Exploration

A spacecraft designed to investigate and discover new planets, star systems, and other celestial bodies. These ships can be equipped with a variety of advanced instruments and sensors, such as telescopes, spectrometers, and radar scanners, to gather detailed information about the objects they encounter.

# METVERSE GALAXYDUST

---



## Repair Class

Designed to perform repairs and maintenance on other spacecraft. These ships can be equipped with advanced repair tools and technologies, such as Astrobots and mechanical arms, to perform complex maintenance and repair tasks in space. Additionally, repair ships can carry spare parts, materials, and supplies needed to make repairs in case of emergencies. They can be vital in situations where a ship has been severely damaged and needs repairs to operate at full capacity.



## Spy

Infiltration ships, equipped with advanced camouflage systems, high-resolution sensors, and covert communication technology, which allows them to operate secretly and collect information about enemy ships and bases or suspicious activities in space without being detected. Spy ships can have advanced reconnaissance capabilities, such as signal scanning, energy signature tracking, or target ship tracking. They are often equipped with minimal armament and highly maneuverable to avoid being detected in case of confrontation.



## Hybrid

Combines the characteristics of several of these types of ships.



## Racer

Ideal for high-performance space racing, with powerful engines and advanced navigation and control systems, advanced flight techniques in atmospheric or zero-gravity environments. They are often used in races that involve stunts and risky maneuvers and can be equipped with weapons and defenses to protect themselves from other competitors.





# METaverse GALAXYDUST

---

## According to their size

- **Mini**

They are the smallest ships available, with a minimal crew and limited cargo capacity.

- **Smart**

Small cargo and crew capacity. Ideal for quick missions. Occupies 1 fleet slot.

- **Middle-Size**

A larger ship that can be used for any task, with greater cargo capacity, different types of weaponry, navigation and exploration technologies. Occupies 2 fleet slots.

- **Massive**

Ships with enormous cargo capacity. Necessary for long journeys. Occupies 5 fleet slots.

- **Commander**

Strong, maneuverable, and well-armed ships, typically occupied by the fleet commander. They facilitate the conquest of medium-sized planets and satellites. Occupies 6 fleet slots.

- **Mothership**

A large-sized ship that serves as a launch platform, operations center, and/or transport for smaller ships. Occupies 7 fleet slots.

- **Starship**

A colossal ship, comparable in size to a moon or planetoid, capable of carrying an entire civilization. Occupies 9 fleet slots.

The size of a ship determines which opponents it can fight and defend against, or the type and amount of cargo it can transport.

## According to their engine

The type of engine a ship has determined the range at which it can travel.

- **Combustion**

Designed for short-distance travel between solar systems, use in close-range combat, and highly maneuverable.

- **Impulse**

Ideal for traveling long distances in a short time. Agile and efficient in medium- and short-distance travel.

- **Hyperspace**

This engine defies the laws of physics, allowing for shortcuts, bending space/time, and reducing stellar distances.

# METVERSE GALAXYDUST

---

## ASTROBOTS

Assets representing astro-mechanical robots that travel alongside the players' fleet, occupying a fleet space within it. Their function is to enhance functions such as attack, defense, and self-repair, as well as other improvements. Astrobots can, depending on their type, enhance the following characteristics (Attack, Defense, Repair, Carrier).

## ◆ BADGES

These are pieces whose possession determines and enhances the abilities of other assets within the game, accelerating the player's growth and improving their experience in the metaverse. Each type of badge improves a specific set of skills or type of gameplay mechanic within GalaxyDust such as Production, Fleet Enhancements, Utility, PVP/PVE, and Hybrid

Like the rest of the assets, their quantities are limited, and their level of rarity, along with their effect, determines the value they possess. These can be temporary or permanent.

## ◆ LICENSES

The possession of these assets is vital, as they allow the player to access star sectors or galaxies where access is limited or exclusive, so that they can explore undiscovered stars and mine resources in them. Additionally, licenses can release the number of ships contained in the fleet, among other functions that improve the gaming experience and facilitate the player's growth within the metaverse.

There are various types of licenses, depending on their function or the type of game they favor (Expedition, Alliance, Production, Profession, Pvp/Pve).

Licenses give the player access to exclusive assets and rewards in GD COINS, among others that are discovered progressively within the game.

There is also a special type of license; "insurance", through which the player can protect their NFTs in case they lose them due to some circumstances. Of course, as with any kind of insurance, certain special conditions apply.

# METaverse GALAXYDUST

---

## ◆ EXPEDITIONS

This is the basic gameplay mechanic within GalaxyDust. In it, the player can explore different stars and planetary systems, allowing them to discover never-before-visited sites, extract resources, find other rewards, and if they are the first to arrive and conquer it, place their name on that system.

Players can also embark on expeditions to stars already discovered by other players, obtaining lower rewards.

The expeditions require the payment of a fee by the player in GD COIN or Deuterium, in addition to causing wear on the ships that must then be repaired, which also has a price.

**In GalaxyDust, every expedition is an adventure full of excitement and rewards. Are you ready for yours?**

## ◆ CONSUMABLES

These are assets whose number of uses is limited, and their availability may also have time and location limitations within the metaverse.

### Tickets

Assets that can be found during expeditions. They can be exchanged for other digital, physical assets or GD Coins. Like all assets in GalaxyDust, they can be traded or sold both within and outside the game.

### Packs

These are sets of assets with a given theme. They can be an exclusive collection from a partner, a starter pack for new players, or advanced packs with technologies, structures, and/or ships of a particular type.

### Miniaturizers

Quantum high-tech assets have the ability to contain objects of greater mass or volume.

- **Q.M.P (Quantum Miniaturizer Platform)**. Allows for the miniaturization of other assets such as ships, astrobots, and structures for transport.
- **Q.M.C (Quantum Miniaturizer Cube)**. Allow for the miniaturization of blueprints and small-sized objects for easy transport.

### Repair Kits

Assets that allow you to repair damages that ships suffer during expeditions.

# METVERSE GALAXYDUST

---

## MPCS

In addition to the commanders controlled by players, there are other characters that interact with them in GalaxyDust. The main ones are:

### **Universal Cartographic**

In the current exploration phase, it plays a crucial role, as it is an AI that rewards Pioneer Commanders who discover a star and for finished missions.

### **Phantom Station**

Artificial life form, created using unknown alien technology, which functions as a commercial space station. It appears randomly in different moments and locations within the metaverse, offering special deals that can be traded using resources, deuterium, GD Coins, among others. These offers will only be available to commanders who manage to find it and dare to enter it.



# METaverse GALAXYDUST

---

## ◆ PROFESSIONS

In GalaxyDust, players can engage in economic activity, allowing them to generate profits in resources, assets, and even GD Coins, and use them to improve their gaming experience or withdraw them from the metaverse as income.

**In GalaxyDust, the player can be:**

### Explorer

Travel to the deepest parts of the universe in order to be the first to discover new stars before anyone else, and thus obtain more profit from each expedition. For an explorer, it is necessary to have technologies and ships that allow them to shorten the time and cost of expeditions, as well as multiply the rewards obtained.

### Miner

Specializes in resource exploitation. They seek to increase their production through more efficient structures and technologies. A good miner must also be ready to protect their operation by using defenses or hiring protection services.

### Carrier

Specializes in the transportation of resources and assets, both their own and others, to different destinations in the universe. Their strategy is to reduce the incurred costs and transport time, avoid inherent risks in the operation, and capture the best distribution networks available.

### Builder

It is responsible for building the necessary structures to expand your colonies, which are key elements for survival and prosperity in a dangerous and unknown universe.

### Technologist or Engineer

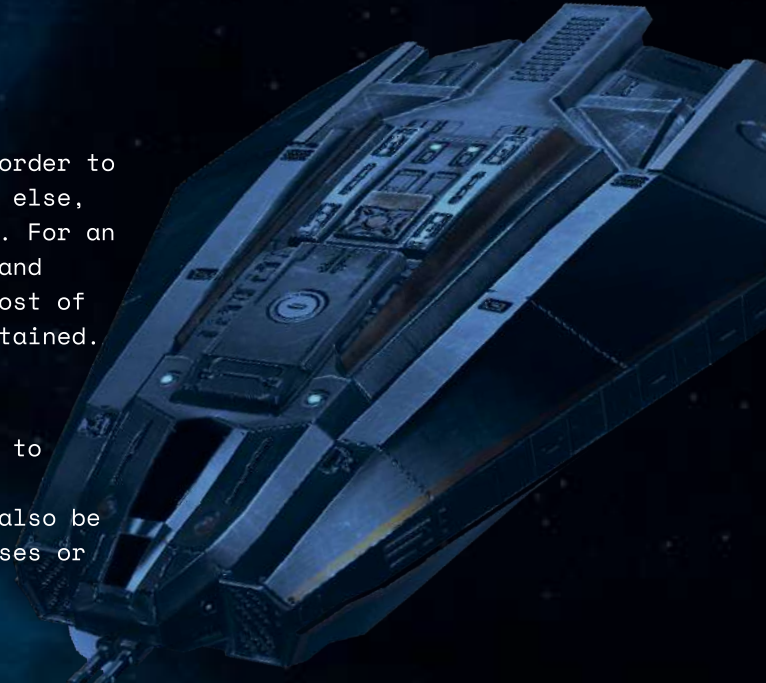
Engineers and/or Technologists specialize in developing their scientific skills to design technologies that allow them to build complex and advanced devices, construct spacecraft, or improve their devices to advance more optimally in the space race.

### Security & Defense

Coordinates military forces. Uses specialized ships, technologies, and other assets to coordinate attacks on opponents, both at their planetary bases and on their transport lines. Seeks to maximize damage while minimizing casualties.

### Protector (Escort)

Their goal is to protect and make shipments from one point to another, delivering their cargo safely. They also dedicate themselves to protecting fleets and planets that are under attack or siege.



# METAVVERSE GALAXYDUST

---

## Spy

To win in any circumstance, it is necessary to know the enemy. That's where the spy comes into play, a player specialized in gathering information about the movements, resources, structures, and fleets of other players. This information, once analyzed, serves to plan strategies against a specific opponent or an entire alliance.

## Mercenary

They dedicate themselves to offering their military skills, expertise, and services in exchange for a lucrative financial compensation or some other material benefit. They are highly trained and equipped combatants who fight for various causes and motivations, whether for money, ideology, revenge, or some other personal reason.

These are hired to carry out dangerous and complex military missions, such as assaults on spacecraft, incursions into hostile planets, or the protection of space convoys. They can also be used as private security forces to protect important installations or fleets, or to carry out covert actions and intelligence operations.

And always keep in mind that a mercenary offers their services "to the highest bidder".

## Pirate

They are individuals or groups under the "protection" of large factions or guilds that engage in the illegal activity of boarding and plundering spaceships or space stations in order to steal resources, technology, or any other type of loot they can find.

They are usually portrayed as dangerous individuals, unscrupulous and untrustworthy, who use violence and intimidation to achieve their goals. They often break the law and endanger the lives of others with a wide variety of motivations, such as greed, revenge, fighting against the established system or just for fun. They are often pursued by the security and military forces of the different galactic nations, and can be considered as wanted criminals in various systems.

## Merchant / Trader

They are an individual or guild dedicated to the commercial activity of buying and selling goods and services in space, whether between individuals or alliances. They are expert, astute, and skilled traders who know how to find the best prices and business opportunities to obtain the greatest benefit for themselves or the alliance that hosts them.

Merchants may face dangers and difficulties in their commercial activity, such as piracy, unfair competition, or sabotage. They may also become embroiled in political intrigues and commercial conflicts between different factions and corporations that face various challenges in their commercial activity.

The assets chosen and enhanced by each player will allow them to gain advantages in one or another profession.

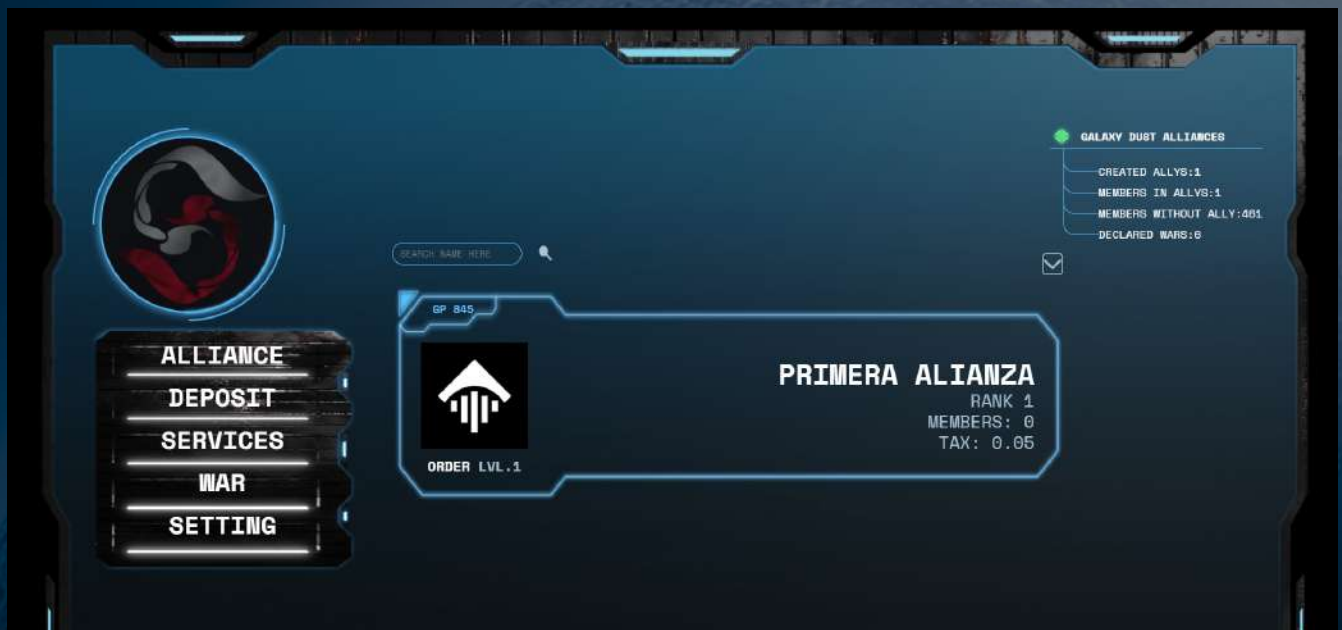
**THE PATH YOU CHOOSE WILL DETERMINE YOUR SUCCESS,  
CHOOSE WISELY, COMMANDER.**

# METVERSE GALAXYDUST

## ALLIANCES

Alliances are groups of players who come together to form a unified force, belonging to a faction within the game, to pursue common goals such as protecting each other, sharing resources, or conquering territories.

Creating a player alliance can be an important strategy to achieve success in GalaxyDust, as it allows them to leverage the experience and skills of all members of the group. In addition, players can coordinate their efforts, share information, resources, and help each other overcome more difficult challenges, defend against external threats, or exploit valuable resources within the metaverse.



Alliances are formed through assets that, with the growth of their members, allow them to obtain levels of improvement for teamwork such as Alliance Depot, Internal Market, among others, as well as allow for alliance competition and ranking.

## SPACE IS TOO VAST TO EXPLORE ALONE

# GALAXYDUST COINS

---

## ◆ WHAT IS A GD COIN?

It is the official means of exchange, the currency, of the GalaxyDust Metaverse. The GD Coin is used, among other things, for:

- Access to all GalaxyDust platforms
- Acquisition of physical and virtual merchandise
- Acquisition of extra functionalities that enhance the in-game experience.
- Acquire governance tokens
- Currency and community

Likewise, you will obtain GD Coins that will allow you to progressively improve your gaming experience by acquiring assets. Thanks to the fact that the value of GD Coins remains fixed, you can withdraw and exchange it for a stable token whenever the market allows it.

You will be part of a healthy and secure community, formed by talented and passionate players like you.

And most importantly, you will enjoy a unique gaming experience, full of experiences that you have never seen anywhere else.



## ◆ DIGITAL ASSETS

In GalaxyDust, collections and NFTs are designed by the creative team and only minted in a small percentage, the rest are minted by the players themselves through Blueprints, each one constituting a unit of information, unique and non-repeatable, stored on the blockchain, based on current Smart Contracts.

**GD Contract:** `0x95C3f6aE54c1FbC1596B4a7dB008637Dd3b0FC33`

**Nova Ships Contract:** `0x4049c62D1889BBbE18f4DF607831F140c22052e7`

**Nova Packs Contract:** `0x0aC9036229570Ea63072850227f7e3137f584d67`

**Exclusive Packs Contract:** `0xcd180ae36a8AF1393c007E5d5C1013936F182229`

Digital assets are the exclusive property of the player, which means they can be extracted from the metaverse and transferred to other wallets, sold, or auctioned as verified collections on official NFT markets such as Open Sea and TofuNFT.



# GALAXYDUST COINS

## ASSETS MARKETPLACE

The process of buying and selling assets within the Marketplace is based on Smart Contracts. All transactions are recorded within the GalaxyDust platform, in a public and auditable process that regulates the transfer of ownership of each specific asset.

This is an open market that operates under the principles of an economy based on supply and demand, generated by the community.

## ASSET RARITY

As you forge your own path within the metaverse, you will discover how to obtain the different assets you will need. Each one of them is a collectible and tradable piece in the p2p market, both within and outside the economy of the metaverse. Their value, defined by the quantity of units available, may be:



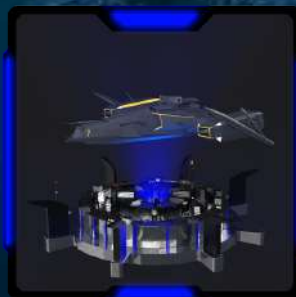
### COMMON

FROM 500 TO 100,000 UNITS



### UNCOMMON

FROM 300 TO 5,000 UNITS



### RARE

FROM 300 TO 1,000 UNITS



### EPIC

COLLECTIONS OF 2, 50, 100, OR 500 UNITS



### LEGENDARY

COMING SOON



### HISTORICAL

COMING SOON



### CHAOTIC

COMING SOON



### GOD

COMING SOON

Periodically, exclusive collections of pieces are also generated, designed for partners, collaborators, content creators, foundations, and special events.

# GALAXYDUST COINS

---

## ◆ GOVERNANCE (DAOS)

The GalaxyDust universe is part of the Satori Metaverse, which encompasses many other brands and projects. In all of them, governance is exercised through the use of the Satori Token.

### WHAT IS THE SASORI TOKEN?

It is a tradable digital asset that allows governance throughout the Satori metaverse.

The multiple applications of the Satori Token within the metaverse make its purchase and holding much more attractive than its sale. With it, players of GalaxyDust can have the right to:

#### ACCESS TO EXCLUSIVE CONTENT

The Satori token will allow the player to access different special events within GalaxyDust. These events can be PVP, PVE, exploration, or even mining. In addition, it will allow the player to acquire consumables, exclusive merchandise, skins for ships in different game modes, NFTs, access to special sectors, and other surprises.

#### HIRING & LEASING SYSTEM

All players will be able to offer their services, according to their profession within GalaxyDust, as well as hire others, as well as lease or rent out assets, using Satori Token as a means of payment.

#### VOTING SYSTEM INSIDE GALAXYDUST

Players, either individually or as part of alliances, can use the Satori Token to choose, through a voting system of advantages and disadvantages, such as faster expedition speed, more fleet defense, lower probability of threats appearing, slower expeditions, higher expedition damage percentage, and in future events such as galaxy-scale events, Which boss will appear? Which faction will get the privileges? And much more.

#### COLONIZATION MODE

With the Satori token, players can acquire satellites, both natural and artificial, entire planets, and solar systems within the game. The exploitation of these assets allows for both passive and active rewards in resources, tokens, and even GD Coins.

#### CONQUEST MODE

Players will be able to create DAOs through the use of Satori Token to organize and manage different sectors of the galaxies, as well as establish rules, create taxes, control access, and maintain the balance of power of conquered sectors.



# GALAXYDUST COINS

---

## GIVEAWAYS

In the Galaxy Dust universe, you will not only have the opportunity to explore the farthest corners of the universe but also to win exciting prizes in the form of digital assets and exclusive merchandise.

Can you imagine winning exclusive clothing, electronic accessories, mobile phones, tickets to the most exotic destinations, special seasonal collections, and even GD Coins? Well, yes, all of that and more is possible in this game! And the best part is that these prizes not only come from Galaxy Dust but also from our partners, foundations, and collaborating non-governmental organizations.

Feel the excitement of discovering new galaxies and, at the same time, winning exclusive and unique prizes. The thrill of space adventure and the excitement of winning prizes come together in one game! So get ready to take off into the universe and win great rewards along the way. The fun never ends in this space science fiction game!

But that's not all! In Galaxy Dust, you will not only have the opportunity to win unique and exclusive prizes, but you can also enter different exciting competition modes and rankings to win even more prizes.

You can challenge other players in tournaments and competitions that will test your skills in space navigation, ship combat, and the exploration of unknown planets. Each competition will give you the opportunity to climb the rankings and win even more incredible prizes.

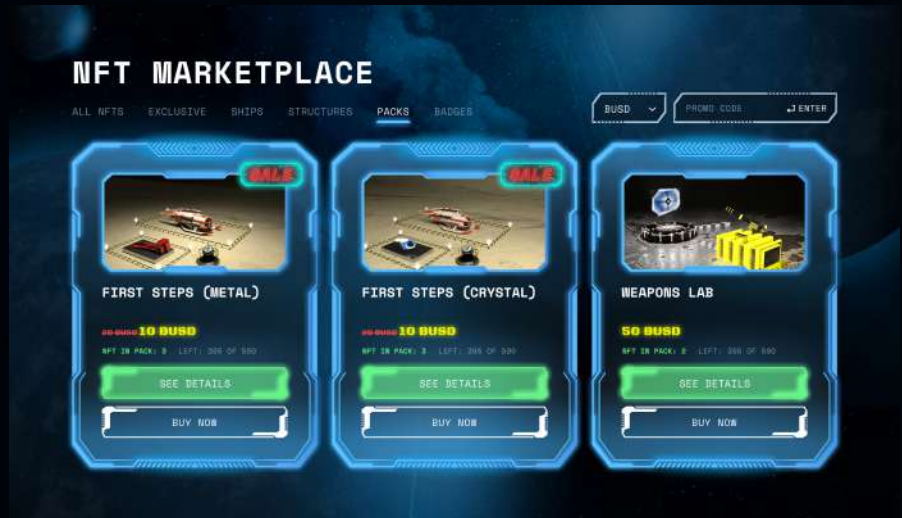
Imagine winning a place on the podium and receiving spectacular prizes that cannot be obtained anywhere else! The excitement of competition and the possibility of winning unique prizes make Metaverse an experience you can't miss!

# PLATFORM

The game platform is composed of the following sections:

## GalaxyDust Official Asset Marketplace (outgame)

In this marketplace, players can buy NFTs and packs from different collections that have already been minted to introduce them into the game. The price of these assets is set by the GalaxyDust team, offering exclusive content and limited editions.



## GalaxyDust In-Game Market

P2P Economy + GD Coin use. It constitutes a market within GalaxyDust, where transactions are carried out from person to person, allowing for the buying and selling of assets and materials using GD Coin as a medium of exchange. The price will be set by the players through supply and demand, establishing the primary economy for asset exchange.



# PLATFORM

---

## Tactical Version

The main version of GalaxyDust. In this version, players can mine, compete, play PVP and PVE, as well as manage their assets and enjoy the tactical version of GalaxyDust.



## Action Play Version

Action Play GalaxyDust where GalaxyDusters can fly their ships using the keyboard or console controller, mobile phone to battle other players in different modes and enjoy the most immersive version of our metaverse.



# TECHNOLOGIES

---

In GalaxyDust, we use different technologies, both for the creation and management of NFTs and in the implementation of the gaming experience

## ◆ BLOCKCHAIN TECHNOLOGIES

For the implementation of Smart Contracts that underpin the digital assets, we use the following platforms:



## ◆ WALLETS

The supported wallets are:



## ◆ APPLICATION & GAME ENGINE DEVELOPMENT

- Laravel PHP (Web Development)
- Unity (3D Development)
- Solidity (Blockchain Development)
- Blender (3D Modeling)
- Adobe Suite (Image Modeling)

## ◆ FUTURE TECHNOLOGIES



# ROADMAP

---

## ◆ CHALLENGES

In the process of launching GalaxyDust, in addition to facing as a team the challenges inherent to any entrepreneurship within the technology market in general and gaming in particular, we encountered many other challenges, the most outstanding being:

### Development of new technologies

The entire gaming experience that constitutes GalaxyDust involves the use of cutting-edge technologies that we have developed thanks to the talent of our human team, in order to reach the standards that we propose to offer.

### Trust and recognition

In GalaxyDust, we believe in loyalty, honesty, and trust as the basic values on which any community is based. We know that this is not something that is built overnight, and we have achieved it by showing our progress day by day in the most transparent and informative way possible, inviting the community to participate in this growth.

### Instability in the market

We are still experiencing the consequences of a global pandemic and a climate of political and economic instability, as well as armed conflicts in a good part of the world. In addition, the emergence of new ways of doing business, opposed to the establishment, has made the market's muddy waters at this time. However, we have the technical and professional capacity, as well as all the passion of great players, to move forward, conquering the universe together with our community.

## ◆ ACHIEVED GOALS

Thanks to constant work and planning, we have achieved many of the objectives set from the beginning, such as:

- ✓ GalaxyDust started its Alpha phase at the beginning of 2022 and began its Beta phase in the last quarter of 2022.
- ✓ We have formed and maintain an active and solid community of players globally.
- ✓ We have carried out collaborations with different content creators, companies, and foundations.
- ✓ Likewise, we reward active players with prizes.
- ✓ We integrated GalaxyDust with other elements of our metaverse such as Sasori Music, Sasori Merchandise, and other projects.

# ROADMAP

---

## ◆ ROAD AHEAD?

Looking back and seeing all that we have achieved fills us with pride. But we know that our journey is just beginning, there is still much to be done and we will share only some of our future goals.

- Make GalaxyDust a reference in the Web3 gaming market worldwide thanks to ludic experiences, mechanics and game modes never seen before.
- Total integration with other games and platforms of the Sasori metaverse.
- Incorporate new functionalities and projects to annex them to the Sasori metaverse where users can interact with them and thus enrich their experience both in virtual and physical spaces.

## 2023 PLANNING

This year, we have very specific objectives to meet.

### 1st quarter 2023

- Deploy the "Exploration" Phase of GalaxyDust, in which players obtain resources and assets necessary for the construction and preparation of the following phases of the game through the "Universal Cartographics" as rewards.
- Implement the new beta version 2.0 with an innovative high-quality interface in terms of graphics, gameplay, and integrating various game modes on the same platform, creating an immersive and challenging experience from any browser.
- Launch a global multi-platform marketing campaign aimed at reaching a broad and diverse audience in different regions and cultures to generate interest and high demand for the product.

### 2nd quarter 2023

- Deploy the "Espionage" Phases and the first PVE and PVP "Competition and Combat" modes, along with the ranking systems in the game.
- Introduce daily, weekly, and monthly mission functions, keeping players engaged, motivated, and competitive.
- Organize special events and tournaments with exclusive rewards for the best players.



# ROADMAP

---

## 1st quarter 2023

- Deployment of the Colonization and Conquest Phases where "Players" will fight through alliances for the acquisition of resources, control, and domination of space.
- Implementation of the 5D Board for different Tactical PvP Modes, Planet vs Planet, among others, fighting in Epic Battles never seen before!
- Implementation of the first-person combat mode where using Unity technology, you can sit directly in the cockpit of your ship, experiencing the sensation of a flight in "Zero Gravity" and shoot your opponents to reduce them to stardust.
- Characterization and Novelization of the "Lore" of the GalaxyDust Metaverse, giving space to the stories and actions executed by the players in the Metaverse.
- Introduce the Sasori Token, which will be used as currency within the game and allow players to buy and sell rare and exclusive objects and resources, and implement the governance system, which will allow players to have a voice in the future development and direction of the Metaverse.

## COMMANDER, THE TAKEOFF SEQUENCE OF YOUR SHIP HAS STARTED

You carry with you the best of what your planet's technology can offer. The future of our world is at stake. The success of your mission will determine whether our solar system becomes a safe and suitable place for the expansion of our species in the galaxy, or if it becomes another frozen tomb like so many other places abandoned by those who failed before. The rest of the fleet is already in orbit, awaiting your orders.